

SureColor SC-F3000 DTG printer

The high productivity direct-to-garment printer



EPSON®
EXCEED YOUR VISION

Take control of your increasing production workloads

Epson's new direct-to-garment (DTG) printer offers a low total cost of ownership (TCO) for mid-to-large garment production businesses and t-shirt suppliers.

Businesses that demand high levels of accuracy, quick turnaround times, and the ability to produce complex designs on a variety of garments, will find that the SC-F3000 offers faultlessly reliable production efficiency, at speed.

For the first time in the DTG line-up, Epson has introduced its bulk ink solution with compact 1.5-litre ink pouches that help lower the total cost of ownership and reduce downtime. The intuitive, highly-durable design has features that will keep even the inexperienced user operating the printer more efficiently, while keeping print quality and accuracy consistently high.



Boost productivity with innovative Epson technology

The SC-F3000 has built-in features that ensure you not only meet your deadlines, but also retain your customers. Plus, bulk orders don't have to mean bland designs – our colour technology lets you keep creative standards high.

Printhead technology (NVT)

Nozzle Verification Technology (NVT) automatically checks that nozzles are firing accurately. Should any nozzle have issues, our Piezo technology will intuitively compensate and ensure that high-quality printing is maintained.

Auto platen gap adjustment

Able to accommodate thicknesses up to 29.5mm, the printer uses its sensors to automatically detect garment's surface height and adjust accordingly, reducing both operator error and waste.

Faster print speed without compromising on quality

Print on light and dark garments nearly twice as fast as comparable products in the DTG market. Protect the printhead and limit dust adherence thanks to the SC-F3000's wide platen gap and optimised large dust catcher.



Work smarter and increase your business efficiency

Epson innovation is designed to increase output and quality levels, and effortless operation. We work hard to ensure those who use our printers work more comfortably – with more information and as much control over the process as possible.

A sophisticated user interface

User-friendly 4.3-inch touch screen makes it easy to check current and next print settings. The inclusion of a warning buzzer ensures you will receive new status notifications, even in noisy production areas.

Bulk Ink Solution

To keep you printing, our Bulk Ink Solution with 1.5-litre ink pouches is simple and compact. With less frequent ink changes and more cost-effective pack sizes, the Bulk Ink Solution improves both productivity and TCO. Ink status is shown via LED indicators and, with front access, ink changeover is quick and easy.

New Garment Creator

For extra control over your output quality, Epson's new Garment Creator software offers a variety of built-in settings to meet different requirements across both light and dark garments.

Environmental Standards

Enjoy peace of mind, knowing that while the SC-F3000 is hard at work, it's also fulfilling today's tougher environmental standards. The printer meets the Global Organic Textile Standard (GOTS) and with Eco Passport Certificate, you're assured that you comply with the Oeko-Tex Standard 100 for high-standard safety ecological textiles.



Print large orders on cotton and cotton-blend products

Unlock new production possibilities with dedicated DTG solutions.

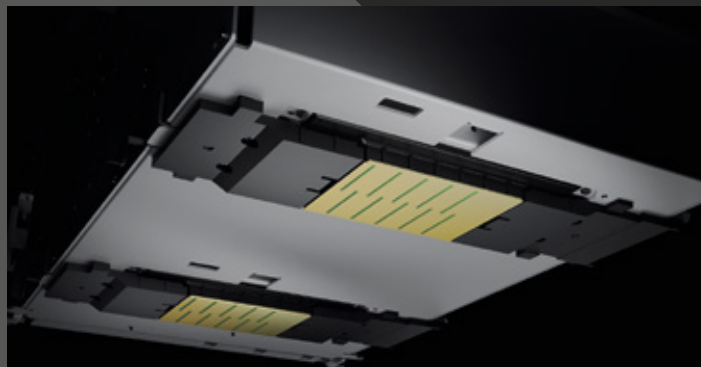
Fast turnaround

Epson's SC-F3000 benefits from two μ TFP printheads, delivering the quality you need as well as the ability to fulfil large, quick-turnaround orders.



Designed for reliability and uptime

Features such as Epson's Nozzle Verification Technology and droplet placement technology have been designed to maximise output. Production uptime is also significantly increased thanks to a combination of improved nozzle reliability and a reduced need for manual operation.



Monitor production levels in real time

Review the status of your printers on smart devices or your PC via the Production Monitor. With clear graphics, you'll be able to easily analyse productivity and receive clear operational updates every day, to support high productivity and efficiency.



Improved maintenance

The printer's new carriage design, with its optimised large dust catcher, reduces the risk of nozzle issues and the need for manual intervention. Moreover, the print accuracy is enhanced by new ink droplet placement technology, which maximises the output.



Print Heads	PrecisionCore MicroTFP printhead * 2
Ink Brand name	Epson UltraChrome DG Ink
Ink Technology	Bulk Ink Solution
Colours	Cyan, Magenta, Yellow, Black, White
Ink Capacity	1,500ml
Max Printing Resolution	1200x1200 dpi
Print Speed	Dark T-shirt mode : 1,200x600dpi 4 Pass HD Bi-directional : 52sec/sheet (~346 × 408mm) Light T-shirt mode : 1,200x600dpi 4 Pass HD Bi-directional : 34sec/sheet (~346 × 408mm)
Max Printable Area	406mm x 508mm
OS Requirements	Windows 8.1 or later Mac OS X (10.12 (Sierra)) or later
HW System Requirements	CPU : Multicore processor (Recommend : Core i7 8th generation or later) Memory : 2GB or more free space (Recommend : 16GB or more) Storage : HDD 32GB or more free space (Recommend : SSD)
Interfaces	Hi-Speed USB2.0 x2 (for PCx1, for USB flash memoryx1), 1000 Base-T/100 Base-TX/10 Base-T
Power Supply	AC100-240V 50/60Hz
Power Consumption (Operating)	Printer : Approx.140W Bulk Ink Solution : Approx.28W
Operating Conditions	Temperature : 10°C - 35°C, Humidity : 20 - 80% (no condensation)
Printer Dimensions	1712mm(W) x 1809mm(H) x 1336mm(D)
Weight	330kg
Environmental	WEEE, RoHS (EU, China, Korea, India), REACH

Ink and Consumables	
UltraChrome DG Black (1.5L)	C13T47W100
UltraChrome DG Cyan (1.5L)	C13T47W200
UltraChrome DG Magenta (1.5L)	C13T47W300
UltraChrome DG Yellow (1.5L)	C13T47W400
UltraChrome DG White (1.5L)	C13T47WA00
Maintenance Liquid (1.5L)	C13T47WB00
Cleaning Liquid (1.5L)	C13T44A900
Pre-treatment Liquid	C13T43R100

Product Options	
Large Hanger Platen 406 x 508mm	C12C936241
Medium Hanger Platen 356 x 406mm	C12C936261
Small Hanger Platen 254 x 305mm	C12C936281
Extra small platen 178 x 203mm	C12C933951
Medium Groove (Polo) platen 356 x 406mm	C12C933961
Sleeve Platen 102 x 102mm	C12C933971

Service Options	
1yr Onsite Service	CP01OSSECH74
1yr self-repair Service with customer fitted heads	CP01OSCRCH74
3yr self-repair Service with customer fitted heads	CP03OSCRCH74
5yr self-repair Service with customer fitted heads	CP05OSCRCH74



For further information please contact your local Epson office or visit www.epson.eu/contact-us

Algeria (+2213) 770 938 617 Austria 01 253 49 78 333 Belgium +32 (0)2 792 04 47 Czech 800/142 052 Denmark 44 50 85 85 East Africa (+254) 734 354 075
Finland 0201 552 091 France 09 74 75 04 04 (Cost of local call, operator charges may apply) Germany +49 (0) 2159/92 79 500 Greece (0030) 211 198 62 12
Hungary 06800 147 83 Ireland 01 436 7742 Israel (+972)-3-5751833 Italy 02-660321 10 (0,12 €/min) Luxembourg +352 27860692 Middle East +9714 2677638
Morocco (+212) 661 31 11 18 Netherlands +31 (0)20 708 5099 Norway +47 67 11 37 00 Poland 0-800 4911299 (0,16 zł/min) Portugal 707 222 111
Romania 0040 214025024 Russia (095) 777-03-55 Slovakia 0850 111 429 Southern Africa (+2711) 465-9621 Spain 93 582 15 00 Sweden +46 8 5051 3701
(Mobilsamtal – 0,99 kr/min, Lokala samtal – 0,30 kr/min, Utlandssamtal – 0,89 kr/min) Switzerland 022 592 7923 Tunisia (+216) 9833 3571 Turkey (0212) 3360303
United Kingdom 0871 42 37766 (+10p per minute plus network extras) West Africa (+234)8020727843

Trademarks and registered trademarks are the property of Seiko Epson Corporation or their respective owners.
Product information is subject to change without prior notice.

EPSON®